



Virtual Desktop Infrastructure Proof of Concept Appliance

Start Your Journey to VDI with Confidence

More than ever, IT departments want to realize the benefits of desktop virtualization—cost savings, ease of management, improved security, and platform independence. The first step is to evaluate how applications would perform in this environment. One challenge is acquiring appropriate hardware for a Proof of Concept (PoC) as well as finding available IT staff time for setup and support. Our PoC appliance allows customers to immediately begin testing their applications on virtual desktop technology in their own environment. Analytics help capture and quantify effects to the infrastructure as applications and features are tested and turned on—a critical data point in successful data-driven decisions about VDI in their organization.

Start with a PoC Appliance

The first step of a VDI PoC is to order our self-contained PoCA (Proof of Concept Appliance) to use for 45 days. The PoCA runs on state-of-the-art server hardware and has built-in storage and networking switches; it will arrive with two thin clients. The appliance contains everything needed to begin the VDI PoC, including VMware vCenter and View Manager, Microsoft Active Directory, Domain Controller, a master Windows XP image, a master Windows 7 image, thin client device managers, user experience monitoring software, and a VMware certified engineer to help you along the way.

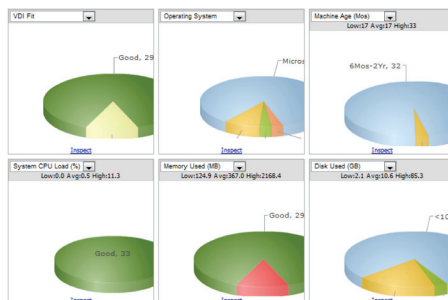
Our VMware certified professional engineers assist and train the customer through installation and start up, provide support during the 45-day PoC, and help with shut down. The engineer will ensure that everything comes up in the right order and is operating properly. The engineer is also available to teach customers how to install applications into the master image, show how to create the appropriate VDI pools, and initiate testing.

The First Step Is Knowing the Last Step

Before beginning a VDI PoC, it is important to define the success criteria. Documenting what you are hoping to accomplish is the

first step. We will help you define success criteria and create tests and demonstrations to support those metrics. Typically, customers look for the following criteria:

- Ability to create pools of desktops through the View Manager wizard to support persistent or non-persistent environments
- Layer-in their desktop applications to verify operation in a VDI desktop
- USB device functionality (re-direction, blocking use, etc.)
- Printing and multi-monitor use
- User roaming
- Application functionality and delivery
- Patch management



Testing and Demonstration

Once the PoCA is up and running, we will teach you how to provision desktop pools for testing and to demonstrate the criteria that you have determined is important in your environment.

Analytics Is Key

Understanding what is happening in the infrastructure while the PoCA is running is critical to the VDI decision. For example: monitoring IO when a recompose has started, determining the total CPU consumption while users are running intensive applications, or observing how the network responds to workloads when PCoIP is enabled.

Our reports provide an accurate and methodical way to measure the effects of applications and features on the underlying infrastructure. This allows for quantitative validation of results and assessment of the environment before and after a specified time period—providing comparisons of consumption by application and user group. This data will pinpoint concerns (infrastructure- or VDI-related) to help easily remediate issues and measure the PoC success criteria.

1-800-800-0019

www.govconnection.com

gov is all you need™

GovConnection
A PC CONNECTION COMPANY

Call your Account Manager to order your VDI Proof of Concept Appliance today.